

AME INTERNATIONAL

Worldwide supplier of tire service tools, accessories, and shop equipment



COMPANY PROFILE



AGRICULTURE ● AUTOMOTIVE ● COMMERCIAL ● CONSTRUCTION ● OTR & MINING

TIRE CHANGING TOOLS FOR THE EXPERTS

Product Range

AME produces all aspects of tire-changing tools and accessories, from passenger to off-the-road. With a complete range of Passenger, Commercial, Ag, OTR tire and tire-related accessories and equipment, AME serves all aspects of wheel and tire service including bead breakers, hydraulic rams and pumps, tire handlers, heavy duty mining jacks, wheel chocks, jack stands, cribbing, tire shop tools, abrasives, inflation and torque solutions.

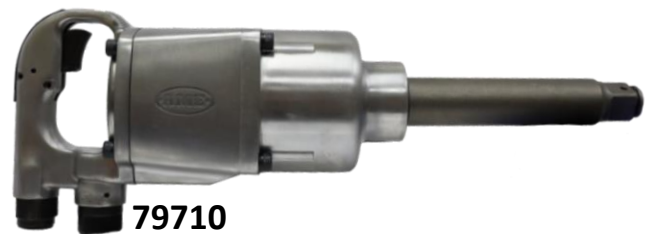
The logo for Bridgestone, featuring a stylized 'B' with a red and white diagonal stripe to its left, followed by the word 'BRIDGESTONE' in a bold, black, sans-serif font.The logo for NWTire Northwest Tire, featuring the word 'NWTIRE' in a large, blue, stylized font with a yellow outline, and 'NORTHWEST TIRE' in a smaller, yellow font below it, all set against a blue and yellow oval background with a tire icon.The logo for Boulevard Tire Center, featuring a stylized black and white road graphic on the left, followed by the words 'Boulevard Tire Center' in a blue, sans-serif font, and the tagline '...More Than Tires' in a smaller black font below.The logo for McGriff Tire & Service, featuring the word 'McGRIFF' in a large, red, bold font with a black outline, and 'TIRE & SERVICE' in a smaller, black, sans-serif font below it.The logo for Kaltire, featuring the word 'KALTIRE' in a large, bold font with 'KALT' in orange and 'TIRE' in black, all enclosed in a black rectangular border.The logo for Best One Tire & Service, featuring the words 'BEST ONE' in a large, bold, black font with a red outline, and 'TIRE & SERVICE' in a smaller, black, sans-serif font below it, with a tire icon integrated into the 'O'.The logo for Colony Tire & Service, featuring a blue and white checkered flag graphic on the left, followed by the word 'Colony' in a large, red, bold font, and 'TIRE & SERVICE' in a smaller, black, sans-serif font below it.The logo for Loves, featuring a red heart with a yellow and red striped border on the left, followed by the word 'Loves' in a large, black, sans-serif font.The logo for Goodyear, featuring the words 'GOODYEAR' in a large, blue, bold font, with a stylized winged foot icon integrated into the 'Y'.The logo for TA TravelCenters of America, featuring a large, stylized 'TA' in blue and red, with 'TravelCenters of America' in a smaller, blue, sans-serif font below it.The logo for McCarthy Tire Service, featuring a red circle with a white 'M' inside, followed by the words 'McCARTHY TIRE SERVICE' in a bold, black, sans-serif font, and 'Family Owned Since 1926' in a smaller, black, sans-serif font below it.The logo for Snider Fleet Solutions, featuring a stylized camera lens icon on the left, followed by the word 'SNIDER' in a large, bold, pink font, and 'FLEET SOLUTIONS' in a smaller, black, sans-serif font below it, with the tagline 'Going The Distance' in a smaller, italicized black font at the bottom.The logo for Pomps Tire Service, Inc., featuring a stylized tire icon on the left, followed by the word 'Pomps' in a large, bold, black font with a red outline, and 'TIRE SERVICE, INC.' in a smaller, black, sans-serif font below it.The logo for Southern Tire Mart, featuring a blue and white stylized tire graphic on the left, followed by the words 'Southern Tire Mart' in a large, red, bold font.The logo for Purcell Tire and Service Centers, featuring a stylized tire icon on the left, followed by the word 'PURCELL' in a large, bold, red font, and 'TIRE AND SERVICE CENTERS' in a smaller, black, sans-serif font below it.

Air Powered Tools

Backed by AME's Air Tool Service Program and One Year Limited Warranty, the new Air Power Buddy (APB) line of air impact wrenches was engineered and built through proven technology with durability and performance in mind. Our APB line seamlessly expands our renowned Heavy-Duty Tool collection, delivering a complementary range of tools that empower efficiency and elevate performance.



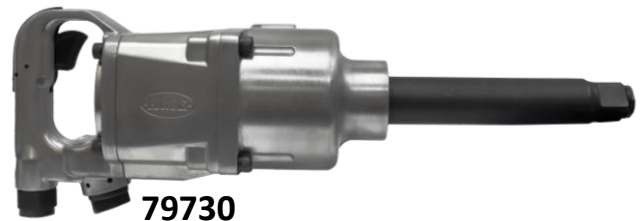
79700



79710



79720



79730

Part #79700: 1/2" Drive Air Impact Wrench with 2" Extended Anvil

Part #79710: 1" Classic Air Impact Wrench with 6" Extended Anvil

Part #79720: 1" Lightweight Mini Air Impact Wrench with 6" Extended Anvil

Part #79730: 1" Premium Air Impact Wrench with 6" Extended Anvil

APB

Bead Breakers

AME is the world leader in bead breakers.

These tools are essential items for breaking down wheel assemblies.

AME's line of breakers provides options to meet your needs and we continue to innovate to meet market demand as changes are made.



Hydraulic Pumps

AME's line of hydraulic pumps is the heart that powers our professional hydraulic power tools. Most of our tool applications require 10,000 PSI, but we also have lower PSI pumps tailored for hoists, rolling jacks, or other low PSI applications. Our certified staff can help you decide which pump will best suit your needs now and down the road.



Aluminum Jacks

AME offers a wide range of aluminum jack cylinders. The aluminum jack has come to dominate the 50–100-ton range because of weight savings that allow a technician to easily place the jack.



These cylinders operate with a hydraulic pump and hose. See the line for unique features including locking collar jacks and a 75-ton mid-size unit.

Hydraulic Rams

AME Hydraulic Rams are an essential tool found in the toolbox of today's OTR Tire Technician. They are commonly used in separating backside beads from wheel components on five-piece wheels.

Our full line includes profiles ranging from 4.75" to 13.75" and strokes to match; no job is too tough due to clearance challenges.



Earthmover Tools

We continue to provide the world's mines, quarries, construction sites, and marine ports with tools and equipment to service the largest tires and rims. In the world of Mining and Earthmover equipment, AME understands the importance and value of the safe operating procedure, and the tools and equipment that make that possible.



Mining Jacks

AME offers a full line of mining jacks with a wide range of solutions for high-tonnage equipment. Whether you're working on site on a tire pad, or in the field on rough terrain, we have mining jacks versatile enough for any situation.



Manufactured to the highest standards and designed for use in the harshest climates, our line of mining jacks and stands will keep you working safely.

Wheel Chocks

AME is proud to offer a complete selection of wheel chocks to fit a wide variety of tires. We can assist you with applications ranging from the largest mine haul trucks to passenger cars.

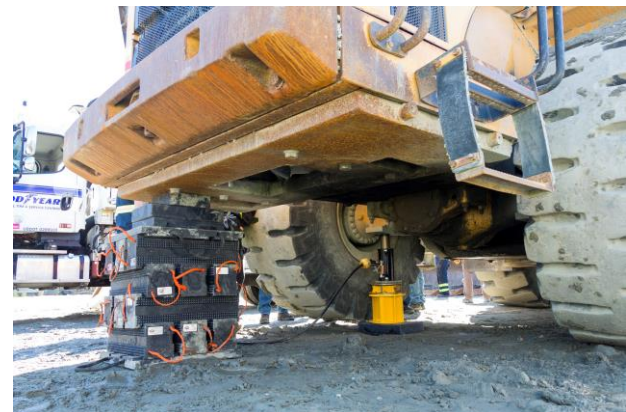
We offer traditional rubber chocks, lightweight orange polyurethane, yellow polyurethane, and high-tech-formed foam texture chocks for the best resilience and safety. Whatever your chock needs are, AME has it.



Cribbing and Blocking

Our world-leading cribbing and blocking products significantly increase safety in the workplace and reduce hazards associated with lifting. AME Intl's blocks and jack plates provide stable platforms for jacks and can even help get the jack up to a high lift point.

Once lifted, our cribbing and jack plates can support your load, capturing the hazardous energy of tasking maintenance like tire and wheel service. Let us help make your job a little safer and easier



Hydraulic Jacks

AME's high-quality hydraulic jacks offer many options for field and shop use. Our steel stands offer you peace of mind when maintaining various types of equipment.



Our Hydraulic Jacks offer many options for equipment, including automotive, HD truck, bus, agriculture, aircraft and more.

Jack Stands

AME's high-quality stands offer many options for field and shop use. Our steel stands offer you peace of mind when maintaining various types of equipment.



Truck Tire Changing Tools

Our selection of truck tire-changing tools focuses on the tools used for commercial and light-duty truck tires. Specifically, the tools used in the manual tire mounting and dismounting process.



Our line includes specialty tools, like our popular Golden Buddy System, designed to reduce time and risk of injury. From the innovative 71025 Impact De-mount Tool to the tried and trusted quality of Ken-Tools T-45A, AME has the tools you need.

Heavy Duty Truck Tools

We provide innovative Heavy Duty Truck tools & accessories for professional technicians. From wheel pullers to cleaning and inspections, AME offers the right tools for the job at hand.



Our focus on safety and efficiency makes AME the first choice for specialty tools in the heavy-duty trucking industry.

Electric Torque

It is essential to have proper torque when performing any wheel service. AME has all the tools to apply, validate, check and repeat the process over and over.

TorqIT
HIGH-PRECISION TORQUE



- Durable and portable precision torque
- Four models from 120 ft/lbs. to 3,000 ft/lbs.
- Lithium Ion 8.0 AH rechargeable battery – full charge in under 60 mins
- Every unit calibrated in ISO17025 laboratory
- 13-month warranty from the date of purchase

Backed by our partners at Haltec and BMS Torque Solutions, the latest technology and digital feedback are available within our precision line. AME offers ISO-certified calibration services for all types of manual wrenches.

Inflation

Maintaining proper air pressure ensures the maximum life of the tire, and that heavier loads are safely handled. AME's line of handheld, digital, and wall mount inflators check all the boxes for the needs of today's professional Tire Technicians.



Partnering with Haltec, the industry leader in inflation and inflation components, our line of gauges, air chucks, and other accessories guarantee quality matched only by our hydraulic tools.

Tire Spreaders & Repair

AME offers a line of tire spreaders for applications from passenger cars to commercial trucks. Pneumatic spread and lift assist for heavier commercial tires and fully manual spreaders for basic passenger repair available for the specific needs. AME's line of innovative tire repair tools continues to set us apart.



ADJUSTABLE LIGHT

Safety

Perform services safely with AME's high-visibility tools. Safety should always be the number one priority when performing any service either in the shop, on the side of the road, or at a customer site.

Our high visibility tools ensure you will be noticed while performing your service and help prevent accidents well before they happen.

AME supports best practice and safety standards endorsed by OSHA, Tire Industry Association, and Rubber Manufacturers Association.

AME
ENTY.

**LOCK OUT / TAG OUT
KITS FOR EVERY APPLICATION**

RETREAD SHOP KIT
95230

- 95030 - Padlock Keyed Same (16)
- 95040 - Standard Steel Hasp (16)
- 95050 - "Do Not Operate" Tags (25 pack (4))
- 95070 - Stop/Plug Lockout (4)
- 95080 - LOTOK Wall Storage

SERVICE TRUCK KIT
95240

- 95020 - 20" Steering Wheel Cover (2)
- 95030 - Padlock Keyed Same (2)
- 95040 - Standard Steel Hasp (2)
- 95050 - "Do Not Operate" Tags (25 pack)
- 95060 - Glad Hands Locks (2)
- 95100 - LOTOK Mobile Service Storage Box

OTR SERVICE TRUCK KIT
95250

- 95010 - Do Not Operate Tailgate Plug
- 95020 - 20" Steering Wheel Cover (2)
- 95030 - Padlock Keyed Same (2)
- 95040 - Standard Steel Hasp (2)
- 95050 - "Do Not Operate" Tags (25 pack)
- 95100 - LOTOK Mobile Service Storage Box

www.ameintl.net
2347 Circuit Way
Brooksville, FL 34604
352-799-1111 - sales@ameintl.net

f i y

AME
ENTY.

**LOCK OUT / TAG OUT
KITS FOR EVERY APPLICATION**

SMALL SHOP KIT
95200

- 95020 - 20" Steering Wheel Cover (12)
- 95030 - Padlock Keyed Same (12)
- 95040 - Standard Steel Hasp (12)
- 95050 - "Do Not Operate" Tags (25 pack (2))
- 95060 - Glad Hands Locks (3)
- 95070 - Stop/Plug Lockout (2)
- 95080 - LOTOK Wall Storage

MEDIUM SHOP KIT
95210

- 95020 - 20" Steering Wheel Cover (16)
- 95030 - Padlock Keyed Same (16)
- 95040 - Standard Steel Hasp (16)
- 95050 - "Do Not Operate" Tags (25 pack (4))
- 95060 - Glad Hands Locks (4)
- 95070 - Stop/Plug Lockout (4)
- 95080 - LOTOK Wall Storage

LARGE SHOP KIT
95220

- 95020 - 20" Steering Wheel Cover (24)
- 95030 - Padlock Keyed Same (24)
- 95040 - Standard Steel Hasp (24)
- 95050 - "Do Not Operate" Tags (25 pack (4))
- 95060 - Glad Hands Locks (6)
- 95070 - Stop/Plug Lockout (4)
- 95080 - LOTOK Wall Storage (2)

www.ameintl.net
2347 Circuit Way
Brooksville, FL 34604
352-799-1111 - sales@ameintl.net

f i y

Automotive Shop Tools

AME's automotive tools and accessories are designed for use on passenger cars, light trucks, and medium-duty applications. We carry a line of innovative OEM quality products, focusing on improving shop and technician productivity.



TPMS

All passenger vehicles produced for resale within the United States after September 2007 are required to have onboard TPMS. The industry has evolved, and TPMS has become a staple product for anyone servicing tires in the retail market.



AME offers a full line of replacement TPMS components, tools, and universal sensors to ensure compliance and fit.

Kits & Charts

At AME International, we understand the challenges faced with the task of outfitting new service fleet vehicles with the proper tools and equipment.

We offer a complete line of tools and equipment to service all aspects of wheels and rims along with a range of safety products.

We made it easier for you to choose the right tools by neatly packaging them within a few service truck kits. These kits include products ranging from inflation and safety to bead breakers and jack stands. Our tire service professionals suggest these kits and include all the basics for fleet service based on your particular needs.

RECOMMENDED BEST PRACTICE ON BUILDING A CRIBBING STACK

The top plate covering the entire stack ensures maximum displacement and utilization of working load limits.

Additional layers of cribbing as needed to get close to the lift point.

Bottom jack plate provides maximum footprint and displacement. Essential for non-compact surfaces. **1448LT, 14503**

An assortment of jack plates is recommended to connect or fill the gap between the top plate and the load. Other sizes will not allow an additional layer of cribbing. Use our variety of jack plate sizes as shown to reach the load. **1448B, 1448S, 1448D**

PYRAMID & GRIP-IT CONFIGURATION

- The versatility of AME cribbing allows blocks to be used with pyramid surfaces. Follow the same setup using three by three with crossing additional layers.
- Pyramid surface secures blocks together to prevent shifting.
- Top and bottom plates are used in the same fashion, but should incorporate grip-it surfaces for maximum stability. **1448B, 14503**

ALWAYS PREPARE A LEVEL SPOT AS BEST AS POSSIBLE

AME BEAD BREAKER KIT CHART

Any AME pump can be used to work with our bead breakers. Shown below are our most popular kit combinations. Each kit contains 8' Hydraulic Hose & Coupler.

MODEL NUMBER	1000	1020	1025	1030	1035	1044	1070
1000	1000	1000	1000	1000	1000	1000	1000
1020	1008	1009	1008	1003	1002	1008	1007
1025	1007	1009	1009	1009	1003	1004	1002
1030	1009	1009	1003	1001	1004	1004	1006
1035	1007	1009	1009	1004	1008	1004	1000

12020 12070 12058

BEAD BREAKER PARTS

These OEM parts will work with all IMT, FCC, Stellar, SPX, Enerpac, and Esco branded bead breakers built before 2015.

1000 OTR GIANT BEAD BREAKER POLYGLASS OEM PARTS	1030 OTR GIANT BEAD BREAKER OEM PARTS
#1000-005 Hex. HD Screw	#1030-007 Shoulder Bolt
#1000-006 Pressure Nut w/ Retaining Ring	#1030-008 Pressure Nut
#1000-007 Hook	#1030-049 Cap Screw for 1000-005
#1000-008 Set Screw 20-26 x 1/2-14 Lg. Torque to 45/60 FT. Lbs.	#1030-022 Center Claw
#1000-009 Claws	#1030-050 Replacement Teeth
#1030-004 Hook	#1030-051 Clamping Bolt
#1030-006 Set Screw	#1030-052 Clamping Spacer

96100 AGRICULTURE TRUCK PACKAGE

CAUTION DO NOT MOVE

96200 SMALL OFF-THE-ROAD TRUCK PACKAGE

CAUTION DO NOT MOVE

96300 LARGE OFF-THE-ROAD TRUCK PACKAGE

CAUTION DO NOT MOVE